

PORT HOPE  
**WALTON STREET**  
RECONSTRUCTION

Public Information Session

25 March 2024

# ON THE AGENDA TONIGHT

---

- Project Priorities
- Introductions — Meet the Team
- Project Updates and Background
- **WHY** are we doing this work?
- **WHAT** is being accomplished?
- **WHEN** we are starting and completing the work?
- **HOW** are we getting this done?
- Next Steps



# OUR PRIORITIES

---

- To Complete The Walton Street Reconstruction Project Effectively & Efficiently
- Minimize Impacts on Businesses, Residents & Visitors
- Keep People Coming to Downtown Port Hope



# Introductions — Meet the Team



Candice White  
**Chief Administrative Officer**



Ron Albright, P.Eng.  
**Project Manager /  
Lead Design Engineer**



Richard Svirga, PMP.  
**Senior Project Manager**



Jeanette Davidson, C.E.T.  
**Director, Works and Engineering**



Steven May, C.E.T.  
**Project Manager**



Mazen Shakkouri  
**Supervisor / Public Liaison**



Mike van den Broek  
**Manager, Engineering**



Richard Kettle  
**Lead Technician**



Darcy Carmichael  
**Lead Foreman**



Matthew Belton, C Tech.  
**Engineering Project Coordinator**



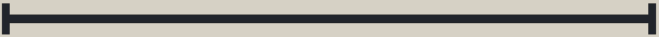




PORT HOPE  
**← WALTON STREET →**  
RECONSTRUCTION

**PROJECT UPDATES AND BACKGROUND**

# PROJECT UPDATES

---

- Residential phase completed 
- Downtown phase commences April 2024 
- Transitional phase scheduled for 2025 pending budget approval 



# PROJECT LIMITS AND ZONES



# PROJECT BACKGROUND

---

- Walton Street has century old infrastructure that must be replaced including - Watermains, Sanitary Sewers & Storm Sewers
- Roadway reconstruction and streetscape improvements have been integrated into the project
- The Sanitary Sewer catchment area represents nearly 1/3 of the urban area of Port Hope
- The infrastructure replacement and upgrades are urgent and necessary



PORT HOPE  
← WALTON STREET →  
RECONSTRUCTION

**WHY ARE WE DOING THIS?**

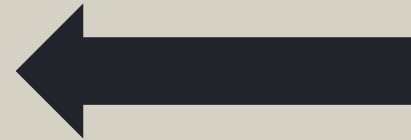


# THE UNDERGROUND INFRASTRUCTURE NEEDS OUR HELP -1



**The existing cast iron watermain — circa the 1930s — is undersized and aging.**

**Typical Cast Iron Watermain  
After Removal — Barrett Street Example**



## THE UNDERGROUND INFRASTRUCTURE NEEDS OUR HELP - 2



**Multiple aging clay and brick sanitary sewers, circa 1920s, collapsing. Some of which were previously combined storm/ sanitary sewers**

**Partially Collapsed Vitrified Clay Sewer  
— Walton Street Example**





PLUS, IT CREATES AN OPPORTUNITY TO ...

---



- Enhance the existing streetscape
- Improve the pedestrian space and connectivity
- Improve accessibility
- Enhance stormwater management



PORT HOPE  
**WALTON STREET**  
RECONSTRUCTION

**WHAT ARE WE DOING?**

PROJECT UNDERTAKINGS

# DOWNTOWN HIGHLIGHTS

---

- Curb extended on south side of Walton Street from John Street to east of Ontario Street to create a 5.0m wide sidewalk across the top of Lent Lane
- Accessibility Improvements
- Benches and table seating through the increased pedestrian space
- Planter beds, bollards and seasonal fencing to delineate the pedestrian space from the roadway



# CURB EXTENSION AND FIVE METER SIDEWALK

- Curb extended on south side of Walton Street from John Street to east of Ontario Street to create a 5.0m wide sidewalk across the top of Lent Lane

Lent Lane



← Ontario Street →

John Street

# CURB EXTENSION AT LENT LANE





# ACCESSIBILITY IMPROVEMENTS



# INCREASED PEDESTRIAN SPACE

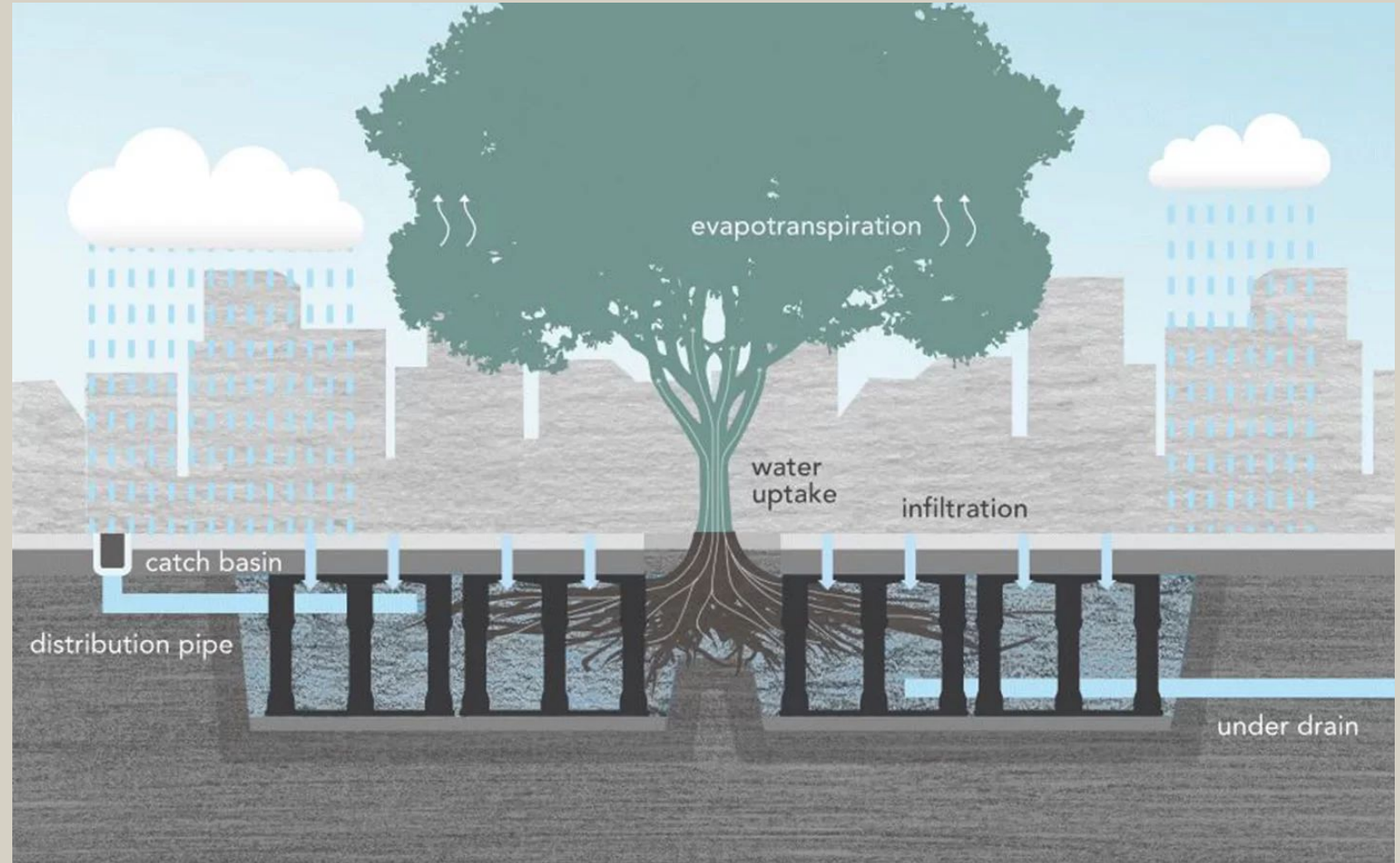




# SILVA CELLS: A GREEN ALTERNATIVE FOR LARGE, HEALTHY TREES

## THE BENEFITS

- Water quality & pollution control
- Peak overflow reduction & flow control
- Low to no maintenance
- Any type of soil



The soil contained in the Silva Cell serves two important functions: growing large trees and treating storm water on-site

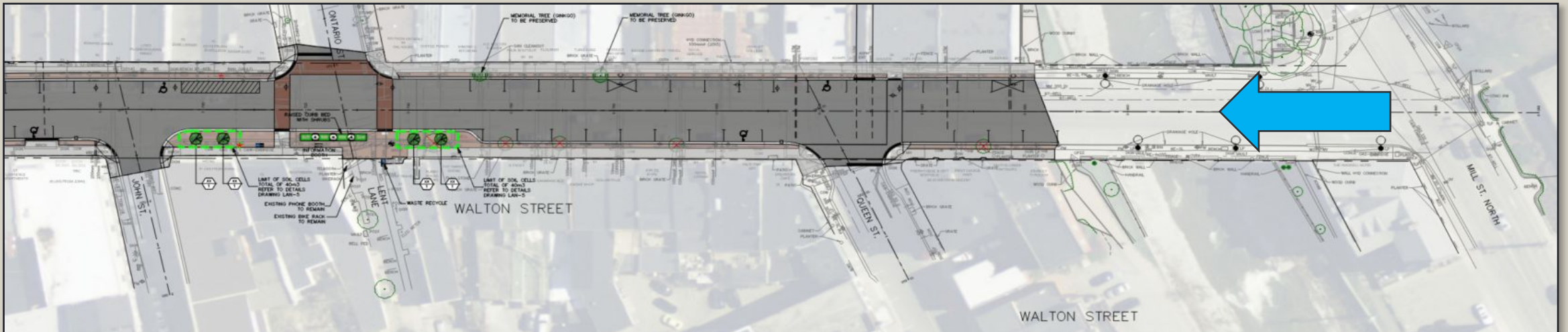
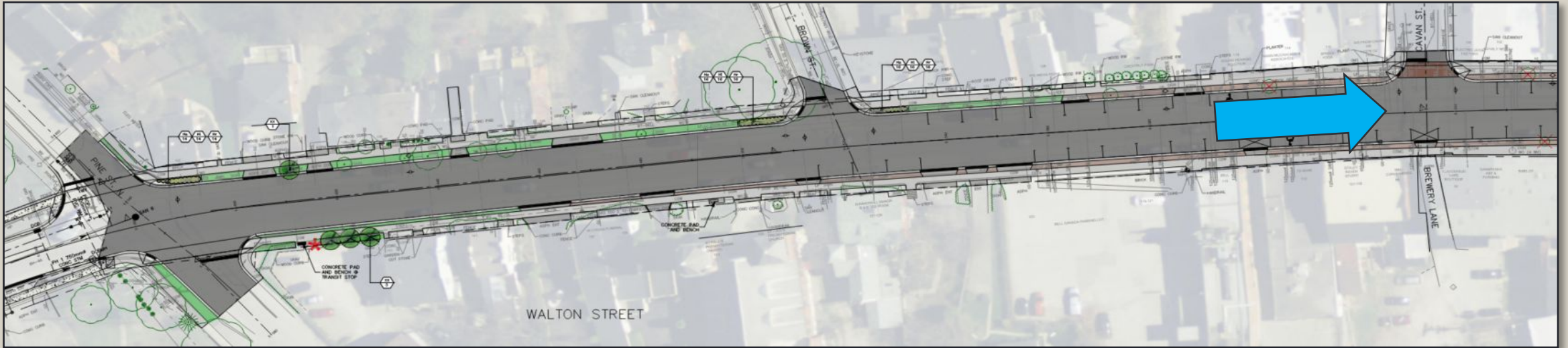
PORT HOPE  
**← WALTON STREET →**  
RECONSTRUCTION

**WHEN ARE WE DOING IT?**

CONSTRUCTION STAGING AND SCHEDULE



# CONSTRUCTION ZONE: CAVAN STREET TO MILL STREET



# CONSTRUCTION STAGING

---

- OZA surveys
- Utility Locates
- Initial mobilization with some signs, machines and parts delivered to Queen Street compound
- Construction Sign placement and Road Closures
- Safety Fencing placed around work zone perimeter
- Temporary water installation
- Construction excavation and removal
- Underground utility construction
- Surface works including curbing, sidewalks, base asphalt
- Final surface landscaping and detail completion



# CONSTRUCTION TIMELINE

---

**START**  
**APRIL 22, 2024**

**FINISH**  
**NOVEMBER, 2024**



# PROPOSED CONSTRUCTION SCHEDULE - APRIL - NOVEMBER 2024

---

- April 22 — Traffic control detours and closure setup with safety fencing placed around work zone perimeter.
- Early May:
  - Removals
  - Temporary water installation
- May to August — Storm, Sanitary and Watermain underground work
- Canada Day — partial opening of Queen Street for one-way traffic
- July — Electrical Work
- September — Traffic Signal work
- October — Curb and Sidewalk concrete work and Base Asphalt

PORT HOPE  
← WALTON STREET →  
RECONSTRUCTION

**HOW ARE WE DOING IT?**

CONSTRUCTION MANAGEMENT

# CONSTRUCTION MANAGEMENT

---

## **Maintenance of pedestrian access to businesses**

- Safety fencing
- Temporary sidewalk closures for service installations
- Replacement of sidewalk at business entrances timed outside of most business hours
- Proposed drop off and exit from Queen Street onto Walton Street east for Tour Buses after Canada Day

## **Delivery Staging**

- Proposed Designated delivery parking/drop off area central on Ontario Street
- Proposed Designated delivery parking/drop off area on Walton Street at Mill Street

**Road closures** — Walton Street from Cavan Street to Mill Street

## **Closed to through traffic:**

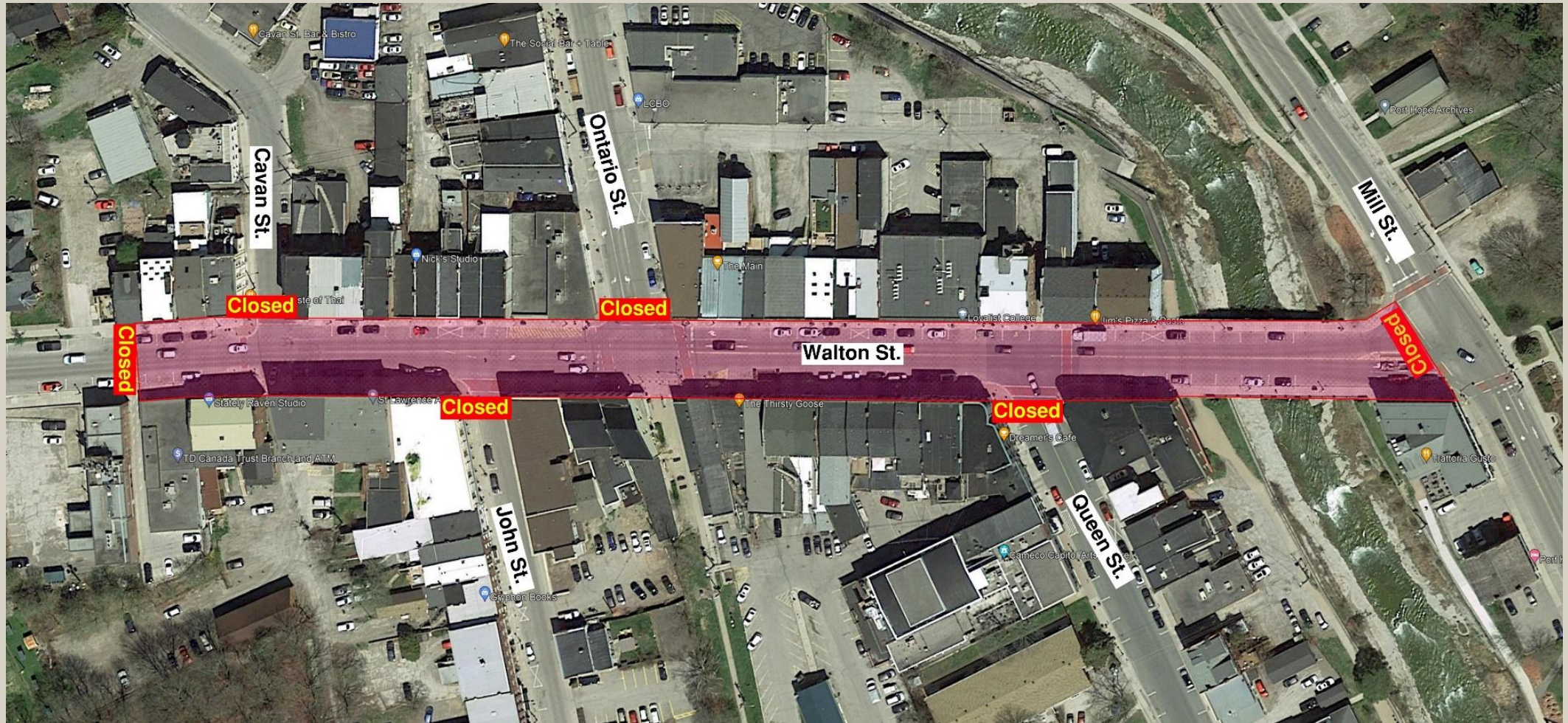
- Queen Street to north side of Augusta Street
- John Street to north side of Augusta Street
- Ontario Street to south side of Thompson Drive
- Cavan Street to South side of South Street





PORT HOPE  
← WALTON STREET →  
RECONSTRUCTION

# ROAD CLOSURES









# ROAD CLOSURES

South Side of Walton Street





PORT HOPE  
— WALTON STREET —  
RECONSTRUCTION

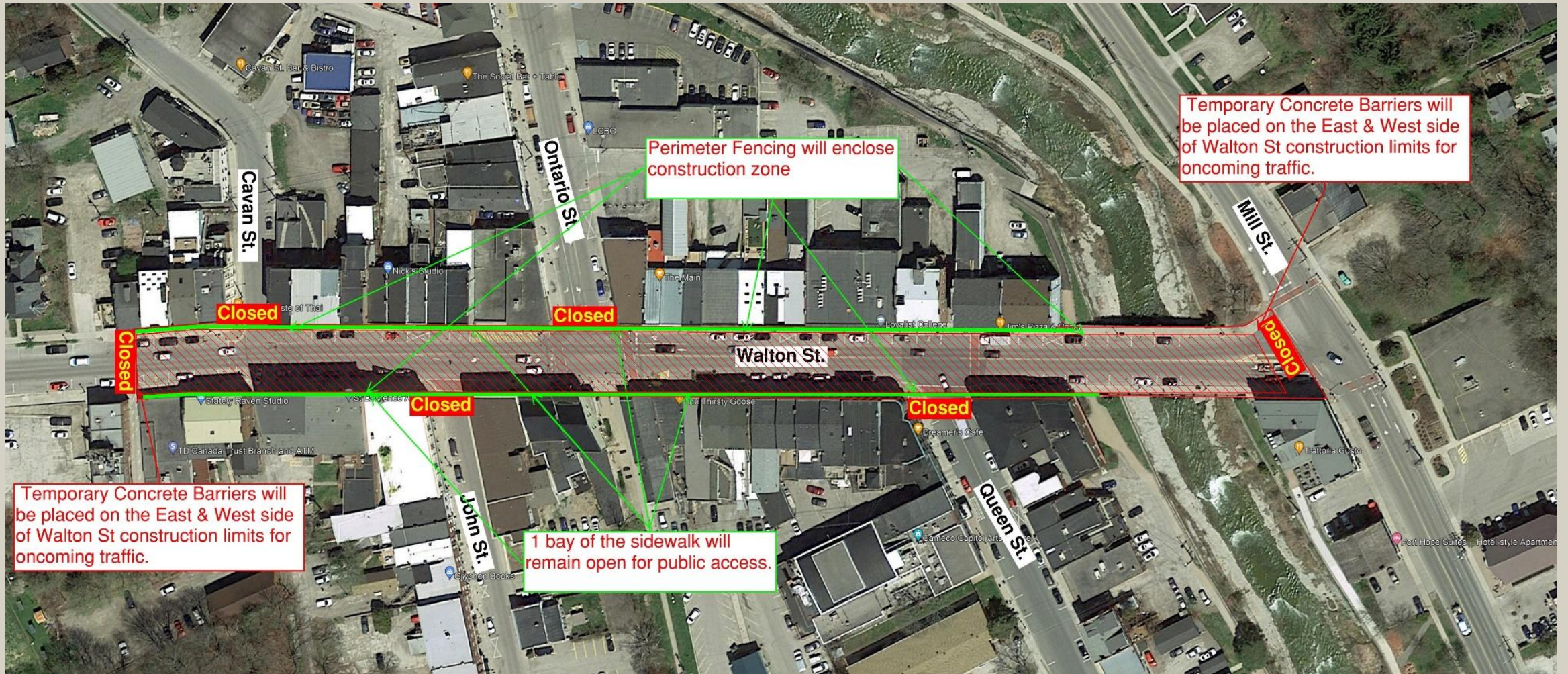
ROAD CLOSURES  
West Side of Walton Street





PORT HOPE  
— WALTON STREET —  
RECONSTRUCTION

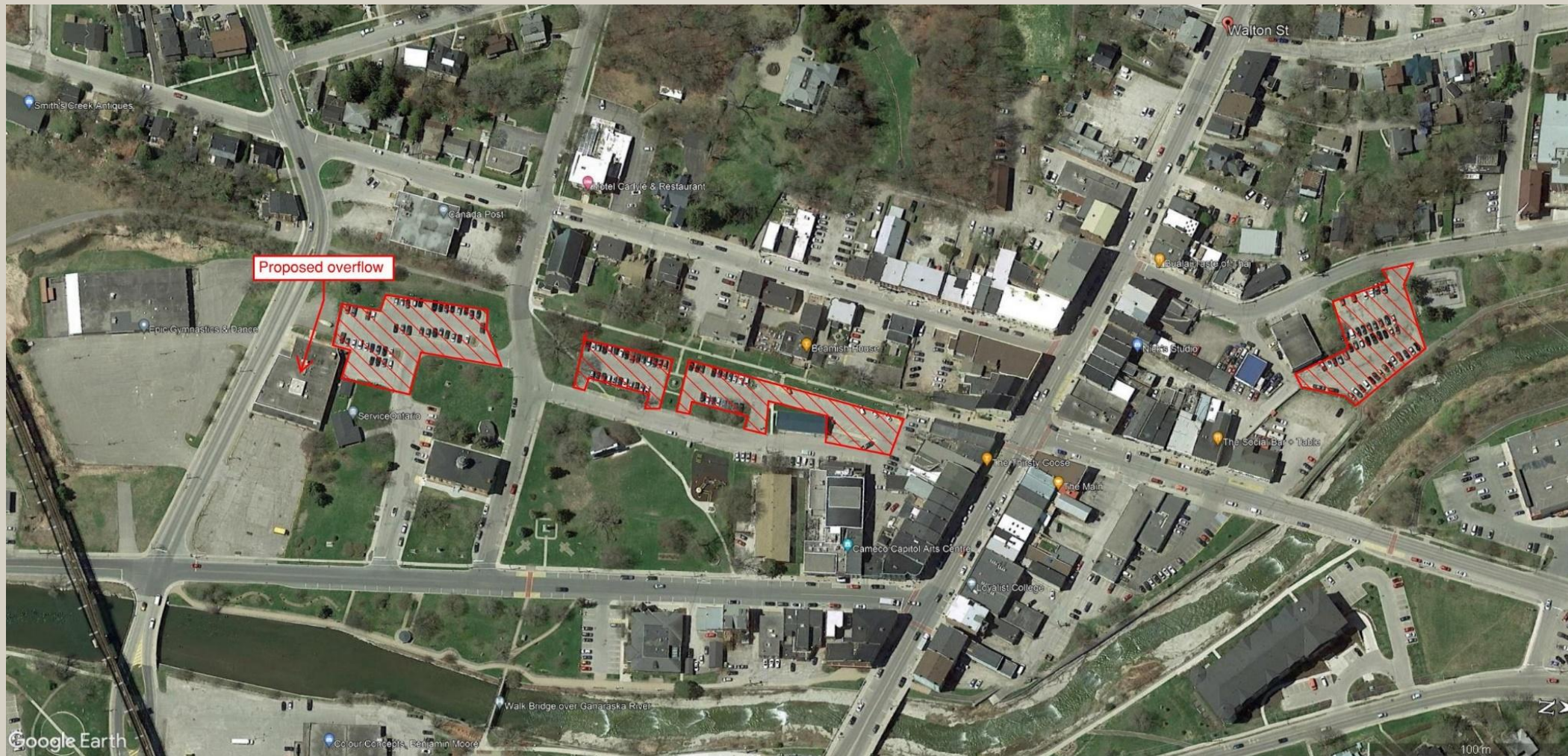
# PEDESTRIAN SAFETY





PORT HOPE  
— WALTON STREET —  
RECONSTRUCTION

# PUBLIC PARKING LOTS





PORT HOPE  
— WALTON STREET —  
RECONSTRUCTION

# DELIVERY ZONES





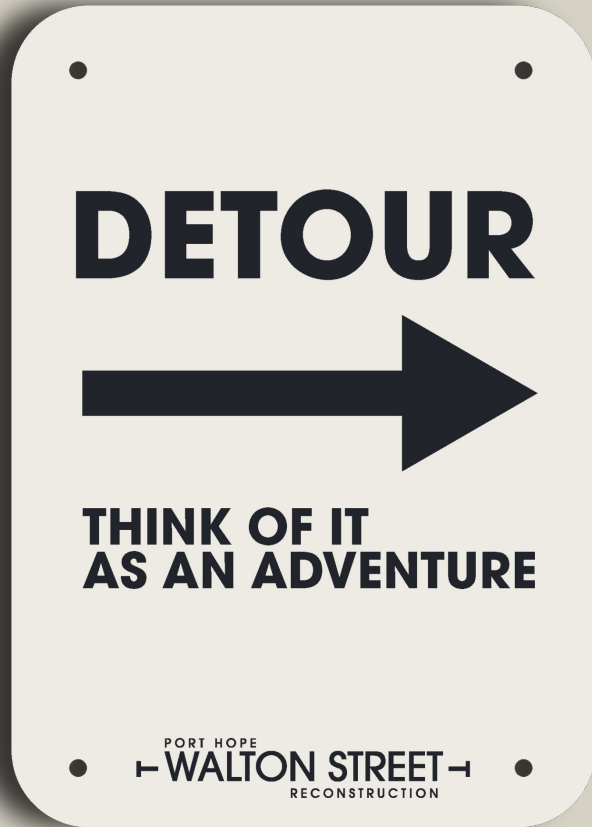
# CONSTRUCTION LAYDOWN AREAS



PORT HOPE  
— WALTON STREET —  
RECONSTRUCTION



# DETOUR MAPS





# DETOUR MAPS

IT'S GOING TO BE LEGEND-ARY!

## LEGEND

**CAUTION AHEAD**  
- WALTON STREET -

**WATCH YOUR STEP  
WE CARE ABOUT YOU**

**DETOUR**  
  
- WALTON STREET -

**SOMETIME THE LONG  
WAY AROUND IS  
THE BEST WAY TO  
FIND WHAT YOU ARE  
LOOKING FOR**

**SIDEWALK CLOSED**  
  
- WALTON STREET -

**WHEN ONE SIDEWALK  
CLOSES THERE'S USUALLY  
ONE ON THE OTHER  
SIDE OF THE STREET**

**ENTER THROUGH BACK**  
  
- WALTON STREET -

**SHOP LIKE A CELEBRITY**

PORT HOPE  
← WALTON STREET →  
RECONSTRUCTION





PORT HOPE  
**WALTON STREET**  
RECONSTRUCTION

**OZA THIRD PARTY INSPECTIONS**

# BUILDING CONDITION SURVEY THIRD-PARTY INSPECTION

---

## **OZA Inspections Ltd.**

- OZA will be conducting surveys of properties adjacent to the project site to verify existing conditions
- This condition survey is important in the unlikely event that issues arise during the construction
- Survey involves an interior and exterior inspection and documentation of buildings and structures determined to be in close proximity to the project work area
- Photographs are taken as part of the survey



# BUILDING CONDITION SURVEY THIRD-PARTY INSPECTION

---

- Pre-construction inspection is voluntary
- All inspections and photographs are confidential
- Property Owner/Managers are recommended to take advantage of this service offered by the Municipality at no charge
- Appointment scheduling:
  - **1-800-667-8263 ext 231**
  - Email [appt@ozainspections.com](mailto:appt@ozainspections.com)
  - **Indicate your name, address, telephone number and refer to File: 22996**



PORT HOPE  
**WALTON STREET**  
RECONSTRUCTION

**COMMUNICATIONS AND  
CONTACT INFORMATION**



# THE LINES OF COMMUNICATION ARE OPEN

---

YES, the Walton Street Reconstruction project will be disruptive and at times feel unpleasant

YES, it will be inconvenient for many business owners, residents and patrons

**AND YES, WE ARE HERE FOR YOU!**

If we don't know about it, we can't fix it.

A Dedicated Walton Street Reconstruction Office coming soon!



**In the meantime**

**Email:**  
**[publicworks@porthope.ca](mailto:publicworks@porthope.ca)**

**Or visit:**  
**[porthope.ca/Walton](http://porthope.ca/Walton)**

# THE LINES OF COMMUNICATION ARE OPEN

---



Matthew Belton, C Tech.  
Engineering Project Coordinator

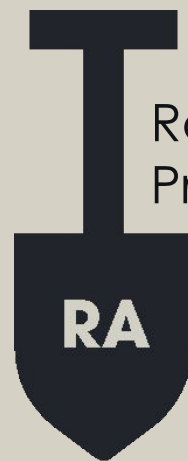


Richard Kettle  
Lead Technician



**Email:**  
**[publicworks@porthope.ca](mailto:publicworks@porthope.ca)**

**Or visit:**  
**[porthope.ca/Walton](http://porthope.ca/Walton)**



Ron Albright, P. Eng.  
Project Manager/Lead Design Engineer



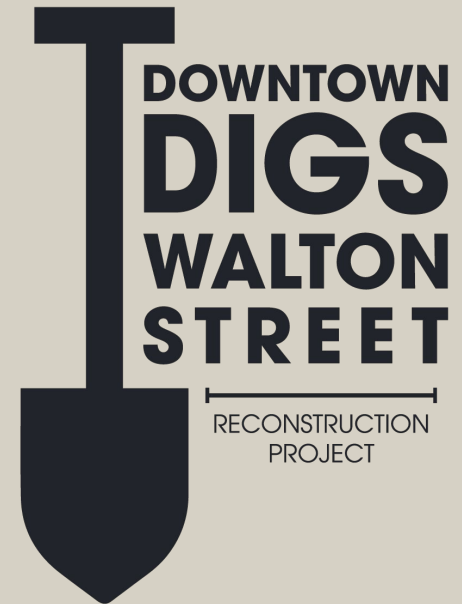
PORT HOPE  
← WALTON STREET →  
RECONSTRUCTION

WHAT'S NEXT?

# NEXT STEPS

---

- One on One Interviews with Businesses starting immediately – We will assist with you building your own continuity plan.
- Questionnaires / Surveys Residents – Determine Specific Needs (some available on the table)
- A Walton Street Reconstruction Project HUB to be located in the Downtown – Staffed to Answer Questions & Keep businesses, Residents & Visitors Informed
- Summer students in place to walk around the business and residential areas assisting people find their way to a certain business, residence, or organization





# MORE STEPS

---

- Delivery Plan for Businesses
- Emergency Services Plan
- Stakeholder Consultation & Communications Plan  
Finalized post one on one interviews & questionnaires
- Downtown District / Community Events & Activations Plan – Improve existing events, create new events and activities that will attract customers, visitors and residents



# EVEN MORE STEPS

---

- Webpage will be in place and updated regularly [porthope.ca/Walton](http://porthope.ca/Walton)
- Email Address for inquiries, support and FAQs — [publicworks@porthope.ca](mailto:publicworks@porthope.ca)
- Social Media account created and updated regularly
- Print materials and notices hand-delivered
- Branded Walton Street Reconstruction wayfinding signage leading to and within the Downtown Core
- Guiding and Promoting an '**OPEN FOR BUSINESS**' state of mind

PORT HOPE  
— WALTON STREET —  
RECONSTRUCTION



Together, we will collaborate to attract people to the Downtown while creating a seamless transition from construction to fully functioning infrastructure and a beautifully finished streetscape

**THE GOAL IS TO KEEP PEOPLE COMING**

PORT HOPE  
— WALTON STREET —  
RECONSTRUCTION

THANK YOU!

---

