

PORT HOPE
WALTON STREET
RECONSTRUCTION

Public Information Session

25 March 2024

ON THE AGENDA TONIGHT

- Project Priorities
- Introductions — Meet the Team
- Project Updates and Background
- **WHY** are we doing this work?
- **WHAT** is being accomplished?
- **WHEN** we are starting and completing the work?
- **HOW** are we getting this done?
- Next Steps



OUR PRIORITIES

- To Complete The Walton Street Reconstruction Project Effectively & Efficiently
- Minimize Impacts on Businesses, Residents & Visitors
- Keep People Coming to Downtown Port Hope



Introductions — Meet the Team



Candice White
Chief Administrative Officer



Ron Albright, P.Eng.
**Project Manager /
Lead Design Engineer**



Richard Svirga, PMP.
Senior Project Manager



Jeanette Davidson, C.E.T.
Director, Works and Engineering



Steven May, C.E.T.
Project Manager



Mazen Shakkouri
Supervisor / Public Liaison



Mike van den Broek
Manager, Engineering



Richard Kettle
Lead Technician



Darcy Carmichael
Lead Foreman






Matthew Belton, C Tech.
Engineering Project Coordinator



PORT HOPE
← WALTON STREET →
RECONSTRUCTION

PROJECT UPDATES AND BACKGROUND

PROJECT UPDATES

- Residential phase completed 
- Downtown phase commences April 2024 
- Transitional phase scheduled for 2025 pending budget approval 



PROJECT LIMITS AND ZONES



PROJECT BACKGROUND

- Walton Street has century old infrastructure that must be replaced including - Watermains, Sanitary Sewers & Storm Sewers
- Roadway reconstruction and streetscape improvements have been integrated into the project
- The Sanitary Sewer catchment area represents nearly 1/3 of the urban area of Port Hope
- The infrastructure replacement and upgrades are urgent and necessary



PORT HOPE
← WALTON STREET →
RECONSTRUCTION

WHY ARE WE DOING THIS?

THE UNDERGROUND INFRASTRUCTURE NEEDS OUR HELP -1



The existing cast iron watermain — circa the 1930s — is undersized and aging.

**Typical Cast Iron Watermain
After Removal — Barrett Street Example**

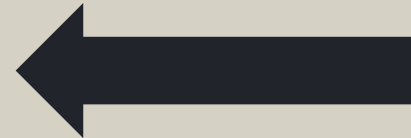


THE UNDERGROUND INFRASTRUCTURE NEEDS OUR HELP - 2



Multiple aging clay and brick sanitary sewers, circa 1920s, collapsing. Some of which were previously combined storm/ sanitary sewers

**Partially Collapsed Vitrified Clay Sewer
— Walton Street Example**



PLUS, IT CREATES AN OPPORTUNITY TO ...



- Enhance the existing streetscape
- Improve the pedestrian space and connectivity
- Improve accessibility
- Enhance stormwater management

PORT HOPE
WALTON STREET
RECONSTRUCTION

WHAT ARE WE DOING?

PROJECT UNDERTAKINGS

DOWNTOWN HIGHLIGHTS

- Curb extended on south side of Walton Street from John Street to east of Ontario Street to create a 5.0m wide sidewalk across the top of Lent Lane
- Accessibility Improvements
- Benches and table seating through the increased pedestrian space
- Planter beds, bollards and seasonal fencing to delineate the pedestrian space from the roadway



CURB EXTENSION AND FIVE METER SIDEWALK

- Curb extended on south side of Walton Street from John Street to east of Ontario Street to create a 5.0m wide sidewalk across the top of Lent Lane

Lent Lane



← Ontario Street →

John Street

CURB EXTENSION AT LENT LANE



ACCESSIBILITY IMPROVEMENTS



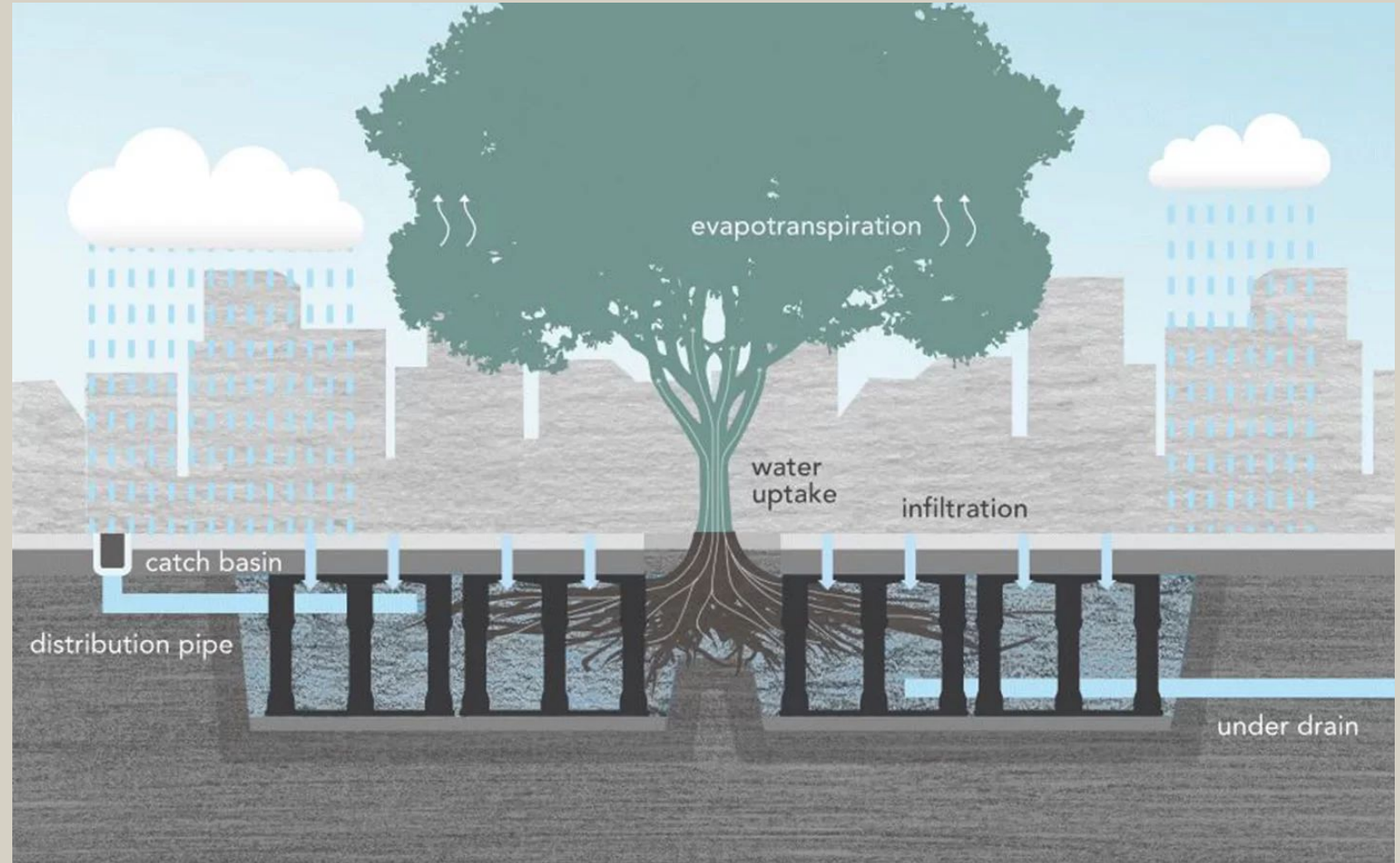
INCREASED PEDESTRIAN SPACE



SILVA CELLS: A GREEN ALTERNATIVE FOR LARGE, HEALTHY TREES

THE BENEFITS

- Water quality & pollution control
- Peak overflow reduction & flow control
- Low to no maintenance
- Any type of soil



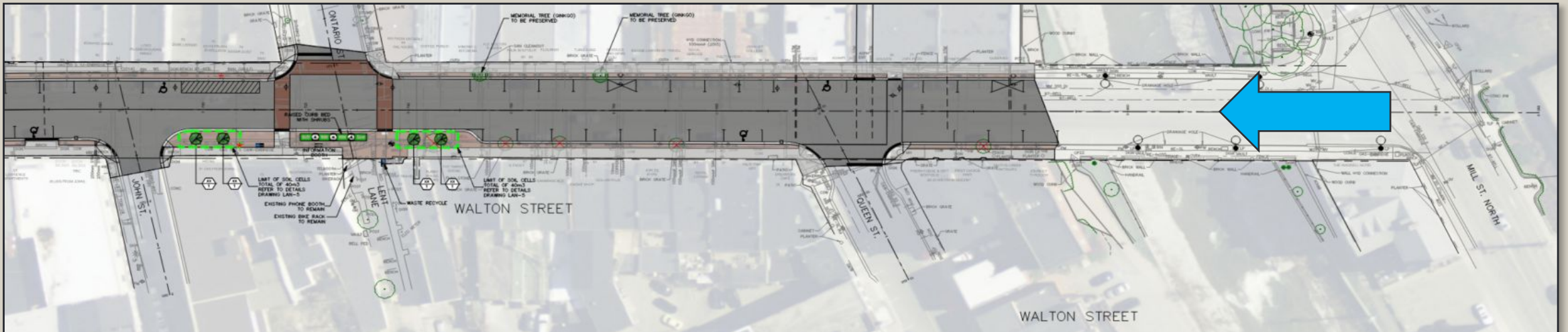
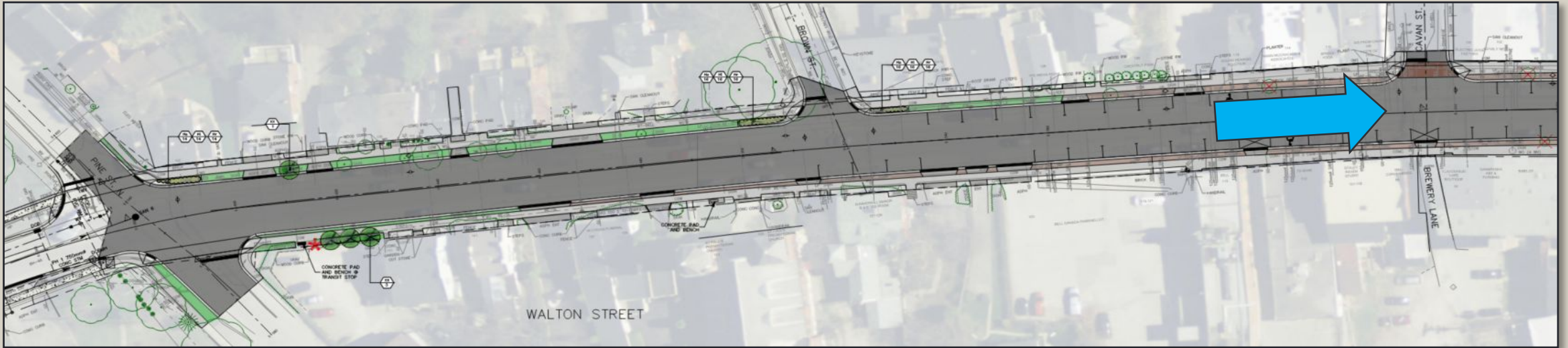
The soil contained in the Silva Cell serves two important functions: growing large trees and treating storm water on-site

PORT HOPE
WALTON STREET
RECONSTRUCTION

WHEN ARE WE DOING IT?

CONSTRUCTION STAGING AND SCHEDULE

CONSTRUCTION ZONE: CAVAN STREET TO MILL STREET



CONSTRUCTION STAGING

- OZA surveys
- Utility Locates
- Initial mobilization with some signs, machines and parts delivered to Queen Street compound
- Construction Sign placement and Road Closures
- Safety Fencing placed around work zone perimeter
- Temporary water installation
- Construction excavation and removal
- Underground utility construction
- Surface works including curbing, sidewalks, base asphalt
- Final surface landscaping and detail completion



CONSTRUCTION TIMELINE

START
APRIL 22, 2024

FINISH
NOVEMBER, 2024



PROPOSED CONSTRUCTION SCHEDULE - APRIL - NOVEMBER 2024

- April 22 — Traffic control detours and closure setup with safety fencing placed around work zone perimeter.
- Early May:
 - Removals
 - Temporary water installation
- May to August — Storm, Sanitary and Watermain underground work
- Canada Day — partial opening of Queen Street for one-way traffic
- July — Electrical Work
- September — Traffic Signal work
- October — Curb and Sidewalk concrete work and Base Asphalt

PORT HOPE
← WALTON STREET →
RECONSTRUCTION

HOW ARE WE DOING IT?

CONSTRUCTION MANAGEMENT

CONSTRUCTION MANAGEMENT

Maintenance of pedestrian access to businesses

- Safety fencing
- Temporary sidewalk closures for service installations
- Replacement of sidewalk at business entrances timed outside of most business hours
- Proposed drop off and exit from Queen Street onto Walton Street east for Tour Buses after Canada Day

Delivery Staging

- Proposed Designated delivery parking/drop off area central on Ontario Street
- Proposed Designated delivery parking/drop off area on Walton Street at Mill Street

Road closures — Walton Street from Cavan Street to Mill Street

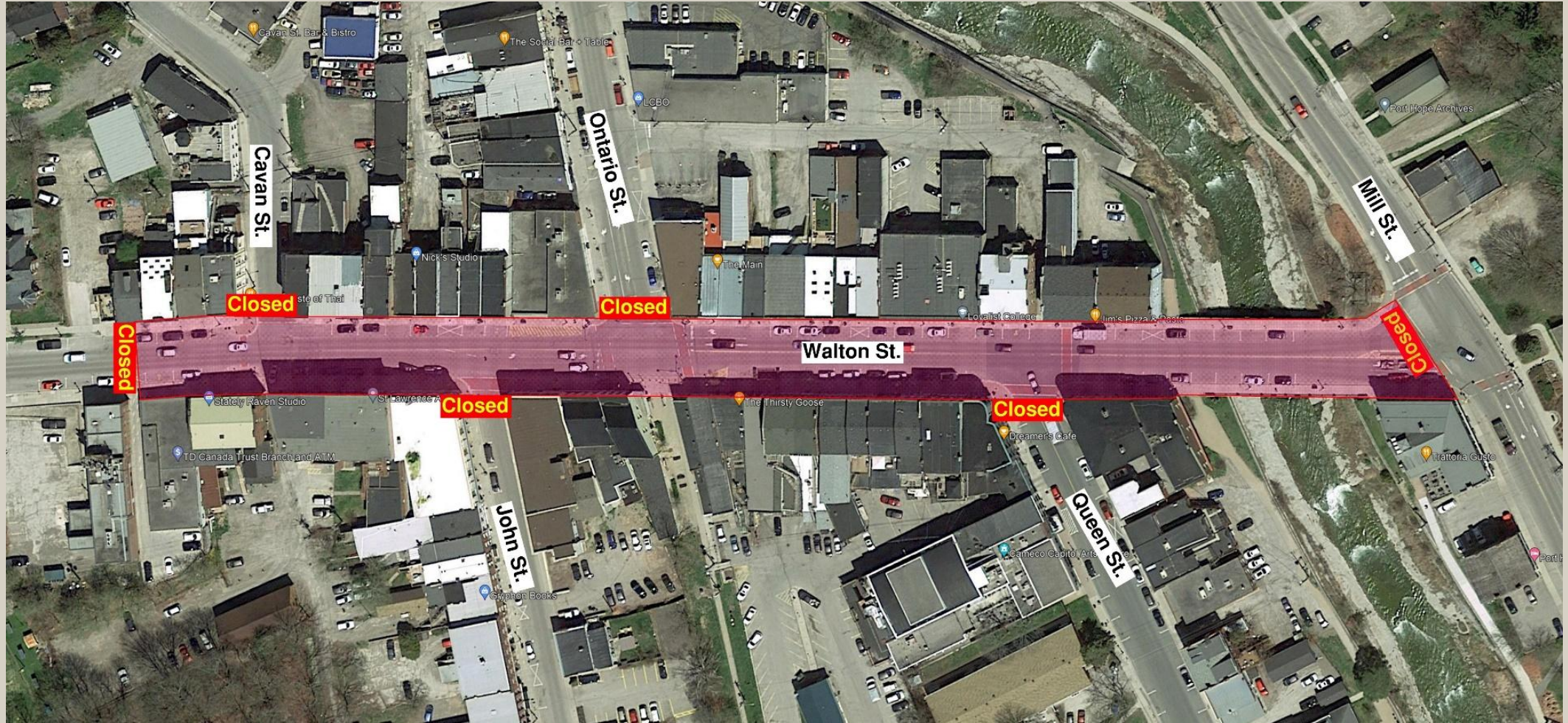
Closed to through traffic:

- Queen Street to north side of Augusta Street
- John Street to north side of Augusta Street
- Ontario Street to south side of Thompson Drive
- Cavan Street to South side of South Street



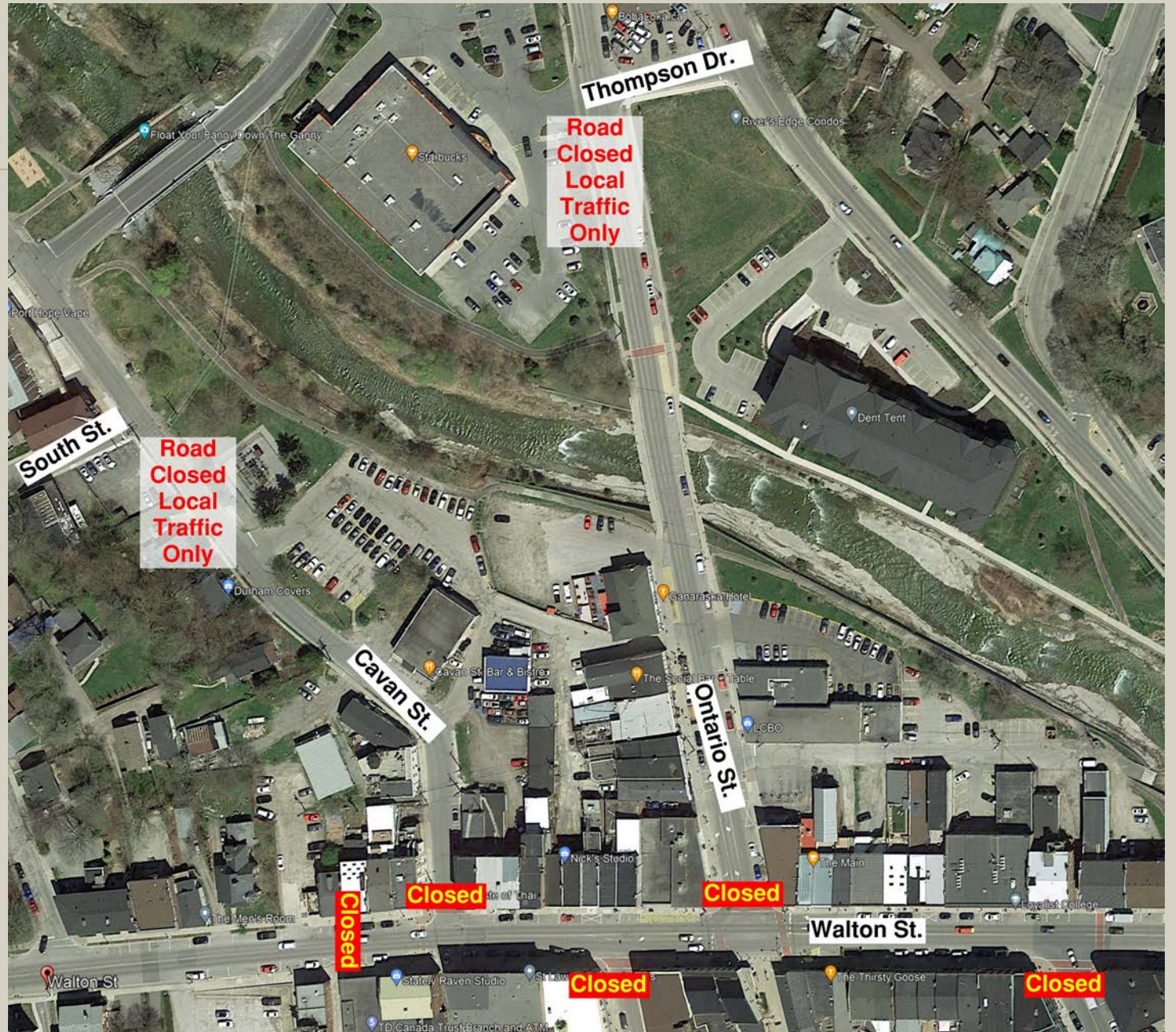
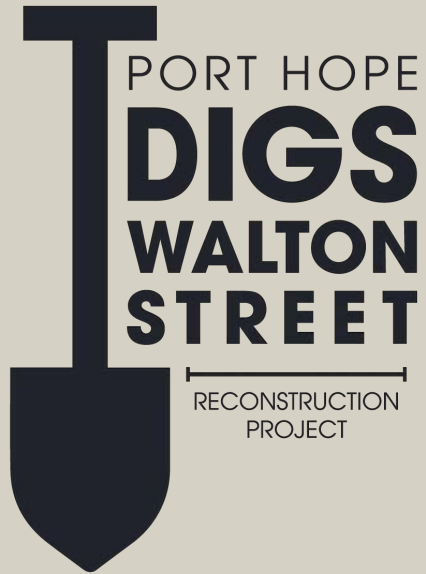
PORT HOPE
← WALTON STREET →
RECONSTRUCTION

ROAD CLOSURES



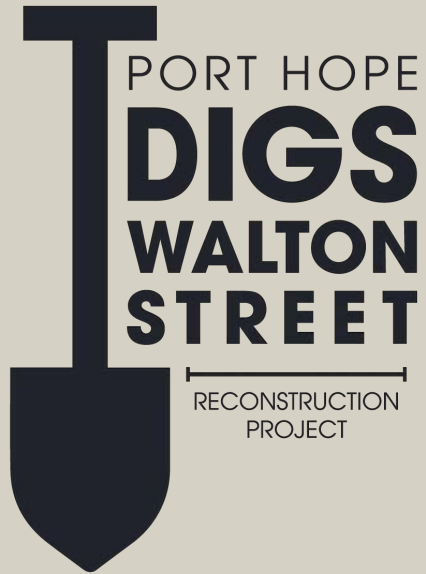
ROAD CLOSURES

North Side of Walton Street



ROAD CLOSURES

South Side of Walton Street



PORT HOPE
— WALTON STREET —
RECONSTRUCTION

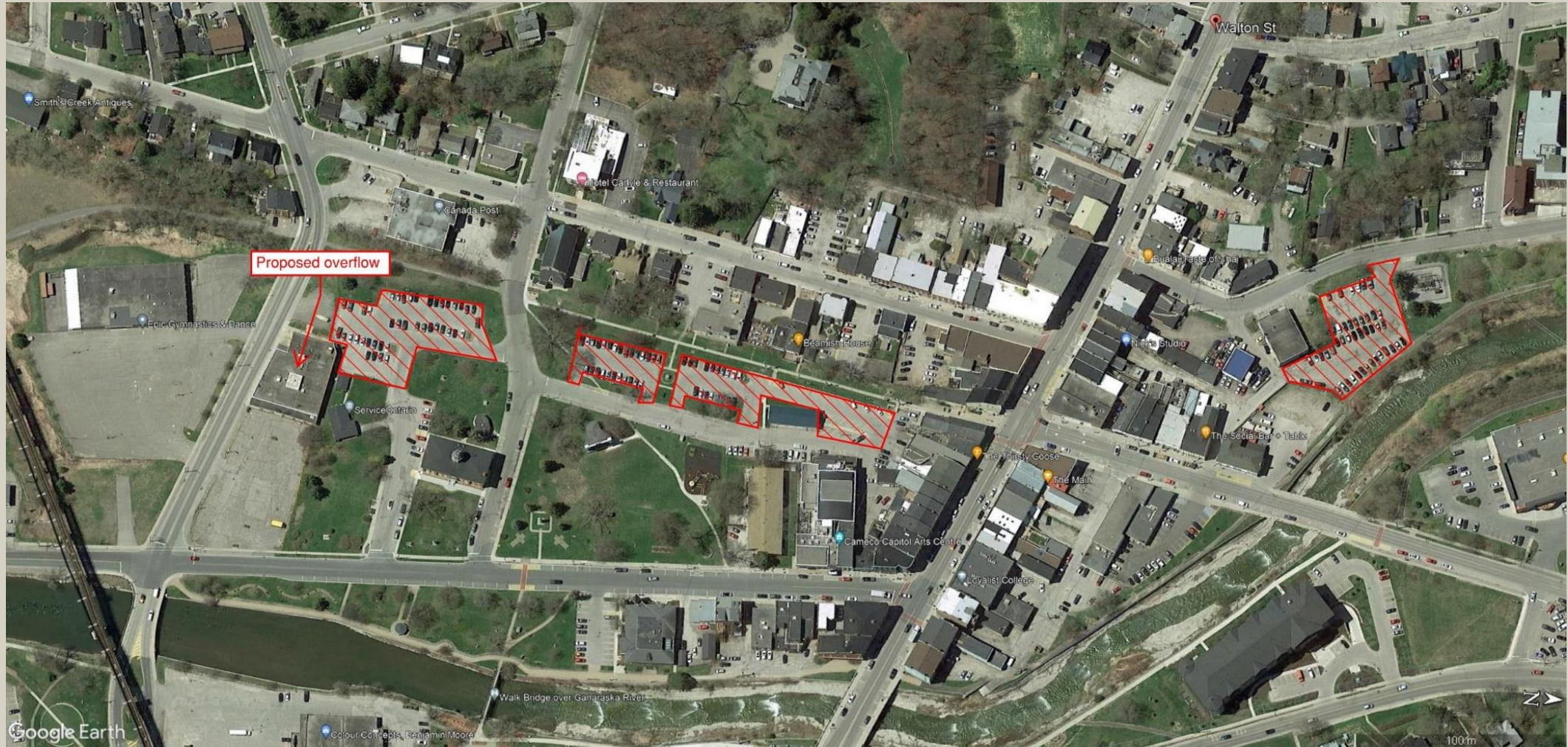
ROAD CLOSURES

West Side of Walton Street



PORT HOPE
— WALTON STREET —
RECONSTRUCTION

PUBLIC PARKING LOTS



PORT HOPE
— WALTON STREET —
RECONSTRUCTION

DELIVERY ZONES

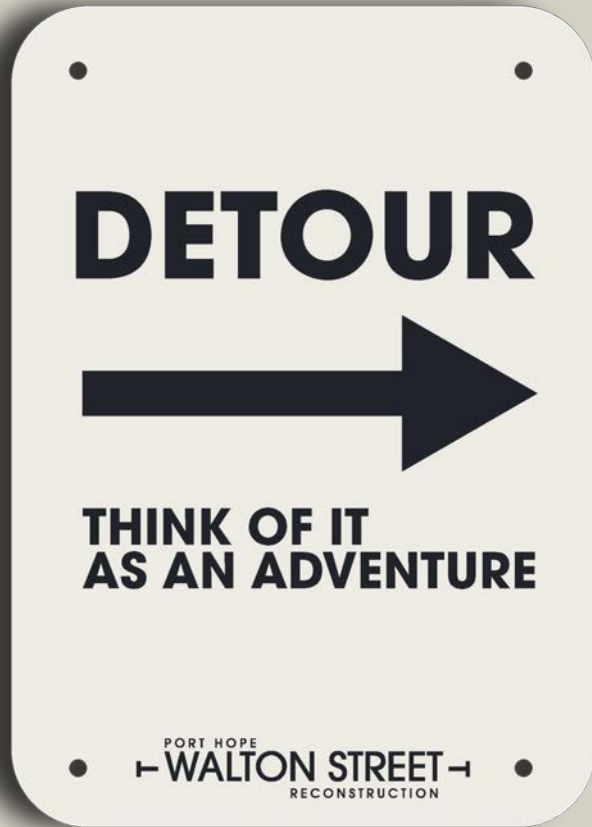


CONSTRUCTION LAYDOWN AREAS



PORT HOPE
— WALTON STREET —
RECONSTRUCTION

DETOUR MAPS



DETOUR MAPS

IT'S GOING TO BE LEGEND-ARY!

LEGEND

CAUTION AHEAD
WALTON STREET

**WATCH YOUR STEP
WE CARE ABOUT YOU**

DETOUR
WALTON STREET

**SOMETIME THE LONG
WAY AROUND IS
THE BEST WAY TO
FIND WHAT YOU ARE
LOOKING FOR**

**SIDEWALK
CLOSED**
USE OTHER SIDE
WALTON STREET

**WHEN ONE SIDEWALK
CLOSES THERE'S USUALLY
ONE ON THE OTHER
SIDE OF THE STREET**

**ENTER
THROUGH
BACK**
WALTON STREET

SHOP LIKE A CELEBRITY

PORT HOPE
← WALTON STREET →
RECONSTRUCTION



PORT HOPE
WALTON STREET
RECONSTRUCTION

OZA THIRD PARTY INSPECTIONS

BUILDING CONDITION SURVEY THIRD-PARTY INSPECTION

OZA Inspections Ltd.

- OZA will be conducting surveys of properties adjacent to the project site to verify existing conditions
- This condition survey is important in the unlikely event that issues arise during the construction
- Survey involves an interior and exterior inspection and documentation of buildings and structures determined to be in close proximity to the project work area
- Photographs are taken as part of the survey



BUILDING CONDITION SURVEY THIRD-PARTY INSPECTION

- Pre-construction inspection is voluntary
- All inspections and photographs are confidential
- Property Owner/Managers are recommended to take advantage of this service offered by the Municipality at no charge
- Appointment scheduling:
 - **1-800-667-8263 ext 231**
 - Email appt@ozainspections.com
 - **Indicate your name, address, telephone number and refer to File: 22996**



PORT HOPE
WALTON STREET
RECONSTRUCTION

**COMMUNICATIONS AND
CONTACT INFORMATION**

THE LINES OF COMMUNICATION ARE OPEN

YES, the Walton Street Reconstruction project will be disruptive and at times feel unpleasant

YES, it will be inconvenient for many business owners, residents and patrons

AND YES, WE ARE HERE FOR YOU!

If we don't know about it, we can't fix it.

A Dedicated Walton Street Reconstruction Office coming soon!



In the meantime

Email:
publicworks@porthope.ca

Or visit:
porthope.ca/Walton

THE LINES OF COMMUNICATION ARE OPEN



Matthew Belton, C Tech.
Engineering Project Coordinator

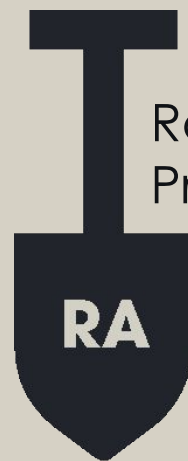


Richard Kettle
Lead Technician



Email:
publicworks@porthope.ca

Or visit:
porthope.ca/Walton



Ron Albright, P. Eng.
Project Manager/Lead Design Engineer



PORT HOPE
← WALTON STREET →
RECONSTRUCTION

WHAT'S NEXT?

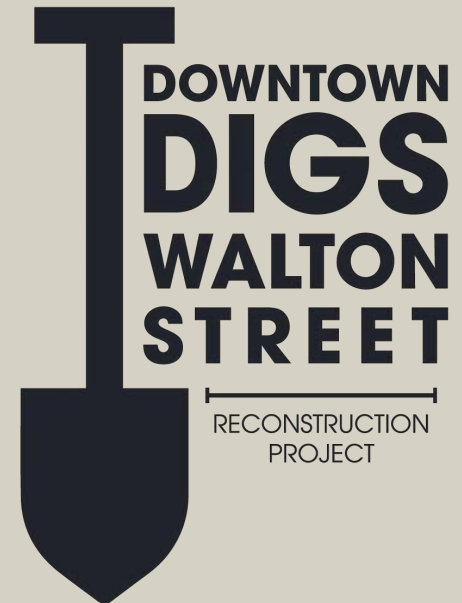
NEXT STEPS

- One on One Interviews with Businesses starting immediately – We will assist with you building your own continuity plan.
- Questionnaires / Surveys Residents – Determine Specific Needs (some available on the table)
- A Walton Street Reconstruction Project HUB to be located in the Downtown – Staffed to Answer Questions & Keep businesses, Residents & Visitors Informed
- Summer students in place to walk around the business and residential areas assisting people find their way to a certain business, residence, or organization



MORE STEPS

- Delivery Plan for Businesses
- Emergency Services Plan
- Stakeholder Consultation & Communications Plan
Finalized post one on one interviews & questionnaires
- Downtown District / Community Events & Activations Plan – Improve existing events, create new events and activities that will attract customers, visitors and residents



EVEN MORE STEPS

- Webpage will be in place and updated regularly porthope.ca/Walton
- Email Address for inquiries, support and FAQs — publicworks@porthope.ca
- Social Media account created and updated regularly
- Print materials and notices hand-delivered
- Branded Walton Street Reconstruction wayfinding signage leading to and within the Downtown Core
- Guiding and Promoting an '**OPEN FOR BUSINESS**' state of mind

PORT HOPE
— WALTON STREET —
RECONSTRUCTION



Together, we will collaborate to attract people to the Downtown while creating a seamless transition from construction to fully functioning infrastructure and a beautifully finished streetscape

THE GOAL IS TO KEEP PEOPLE COMING

PORT HOPE
— WALTON STREET —
RECONSTRUCTION

THANK YOU!

