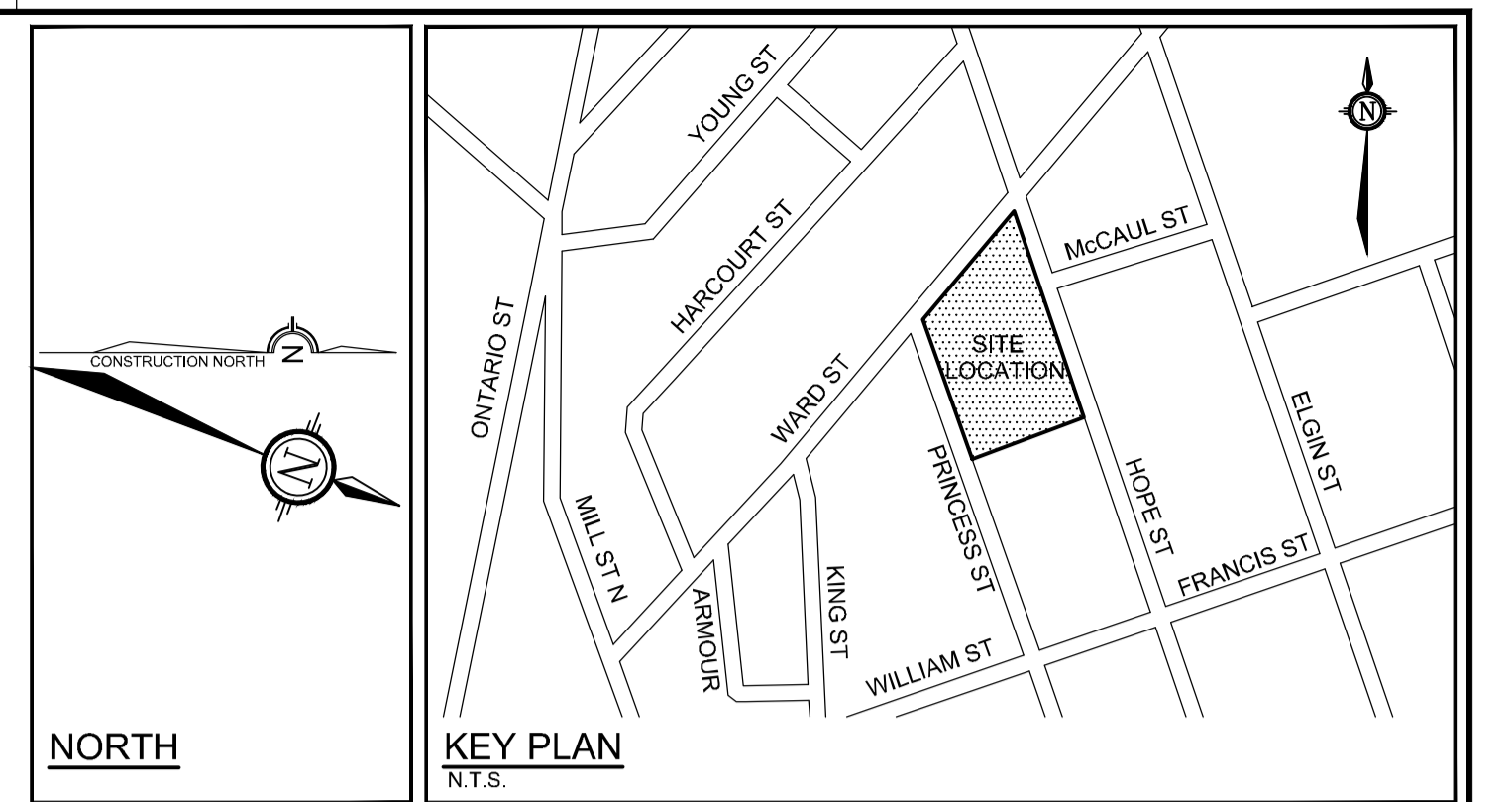
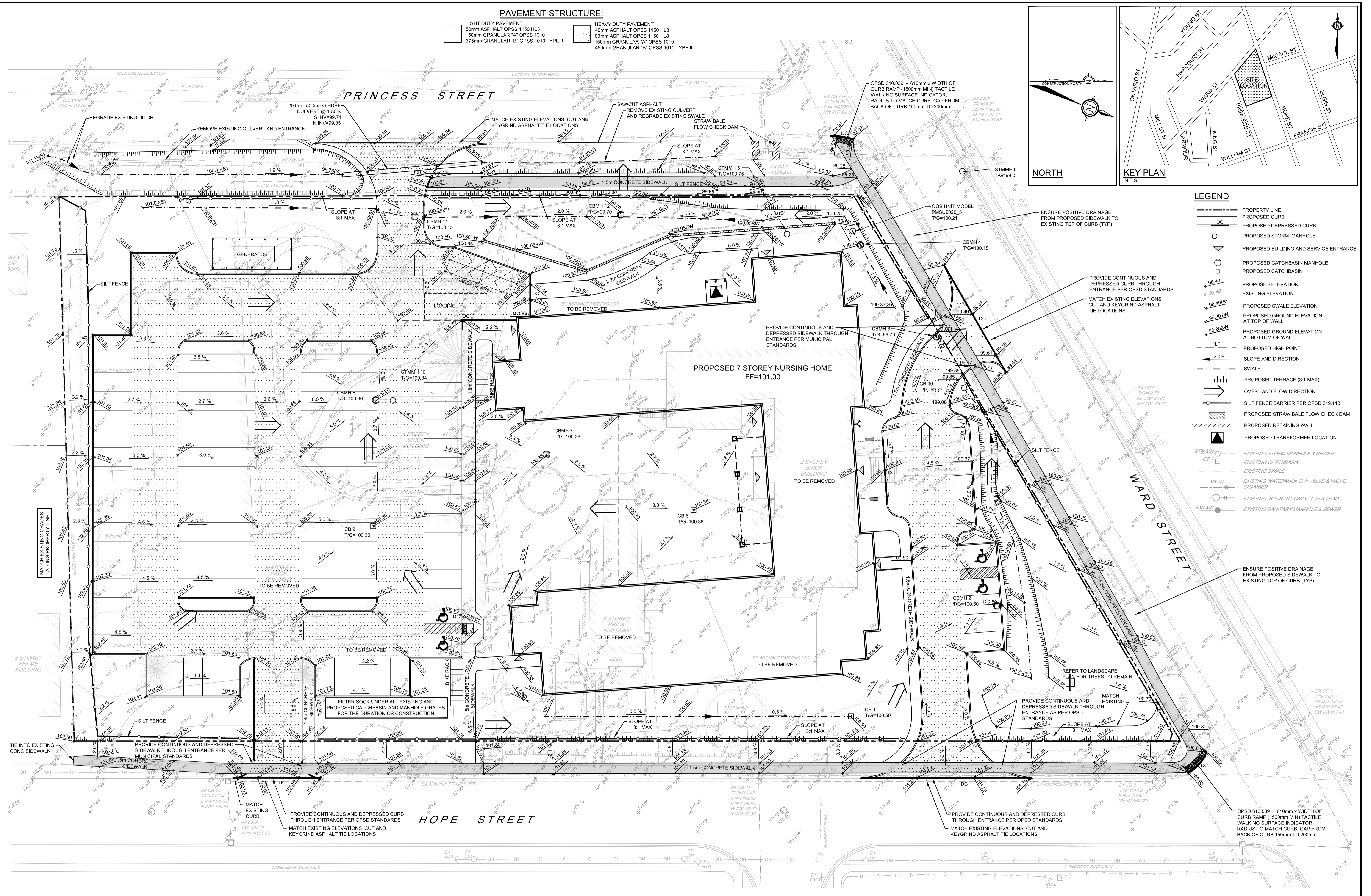


PAVEMENT STRUCTURE:

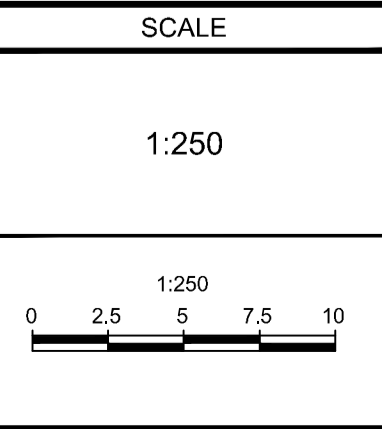
- | | |
|---|---|
| <p>LIGHT DUTY PAVEMENT
 50mm ASPHALT OPSS 1150 HL3
 150mm GRANULAR "A" OPSS 1010
 375mm GRANULAR "B" OPSS 1010 TYPE II</p> | <p>HEAVY DUTY PAVEMENT
 40mm ASPHALT OPSS 1150 HL3
 80mm ASPHALT OPSS 1150 HL8
 150mm GRANULAR "A" OPSS 1010
 450mm GRANULAR "B" OPSS 1010 TYPE II</p> |
|---|---|



- LEGEND**
- PROPERTY LINE
 - PROPOSED CURB
 - DC PROPOSED DEPRESSED CURB
 - PROPOSED STORM MANHOLE
 - ▽ PROPOSED BUILDING AND SERVICE ENTRANCE
 - PROPOSED CATCHBASIN MANHOLE
 - PROPOSED CATCHBASIN
 - PROPOSED ELEVATION
 - EXISTING ELEVATION
 - PROPOSED SWALE ELEVATION
 - PROPOSED GROUND ELEVATION AT TOP OF WALL
 - PROPOSED GROUND ELEVATION AT BOTTOM OF WALL
 - H.P. PROPOSED HIGH POINT
 - SLOPE AND DIRECTION
 - SWALE
 - PROPOSED TERRACE (3:1 MAX)
 - OVER LAND FLOW DIRECTION
 - SILT FENCE BARRIER PER OPSD 219.110
 - PROPOSED STRAW BALE FLOW CHECK DAM
 - PROPOSED RETAINING WALL
 - PROPOSED TRANSFORMER LOCATION
 - EXISTING STORM MANHOLE & SEWER
 - EXISTING CATCHBASIN
 - EXISTING SWALE
 - EXISTING WATERMAIN CW VALVE & VALVE CHAMBER
 - EXISTING HYDRANT CW VALVE & LEAD
 - EXISTING SANITARY MANHOLE & SEWER

NOTE:
 THE POSITION OF ALL POLE LINES, CONDUITS, WATERMANS, SEWERS AND OTHER UNDERGROUND AND OVERGROUND UTILITIES AND STRUCTURES IS NOT NECESSARILY SHOWN ON THE CONTRACT DRAWINGS, AND WHERE SHOWN, THE ACCURACY OF THE POSITION OF SUCH UTILITIES AND STRUCTURES IS NOT GUARANTEED. BEFORE STARTING WORK, DETERMINE THE EXACT LOCATION OF ALL SUCH UTILITIES AND STRUCTURES AND ASSUME ALL LIABILITY FOR DAMAGE TO THEM.

No.	REVISION	DATE	BY
5	REVISED PER MUNICIPALITY COMMENTS	JAN 28/22	CJR
4	REVISED PER MUNICIPALITY COMMENTS	NOV 12/21	CJR
3	ISSUED FOR BUILDING PERMIT	AUG 31/21	CJR
2	ISSUED FOR SITE PLAN APPLICATION	JUNE 14/21	CJR
1	ISSUED FOR COORDINATION	JUNE 10/21	CJR



FOR REVIEW ONLY

DESIGN	LSC
CHECKED	CJR
DRAWN	LSC
CHECKED	CJR
APPROVED	CJR

NOVATECH
 Engineers, Planners & Landscape Architects
 Suite 200, 240 Michael Cowpland Drive
 Ottawa, Ontario, Canada K2M 1P6
 Telephone (613) 254-9643
 Facsimile (613) 254-5867
 Website www.novatech-eng.com

LOCATION
 MUNICIPALITY OF PORT HOPE
 65 WARD STREET / 20 HOPE STREET SOUTH

DRAWING NAME
 SOUTHBRIDGE CARE HOMES
 PORT HOPE NURSING HOME

GRADING PLAN
 ULTIMATE CONDITIONS

PROJECT No. 120226
 REV 5
 DRAWING No. 120226-GR2

M:\2026\120226\CD\Design\120226-GR.dwg, GR, L1, Jan 28, 2022, 2:07pm, amrathia