

WATERMAIN TABLE

CHAINAGE	FINISHED GRADE	TOP OF WATERMAIN	COMMENT
0+000	99.44	EXISTING	EXISTING
0+007.9	100.05	97.65	VALVE & VALVEBOX
0+010.7	99.74	97.04	STORM CROSSING
0+015.0	100.05	97.65	TOP OF WATERMAIN
0+023.0	100.85	98.45	CAP AT BUILDING

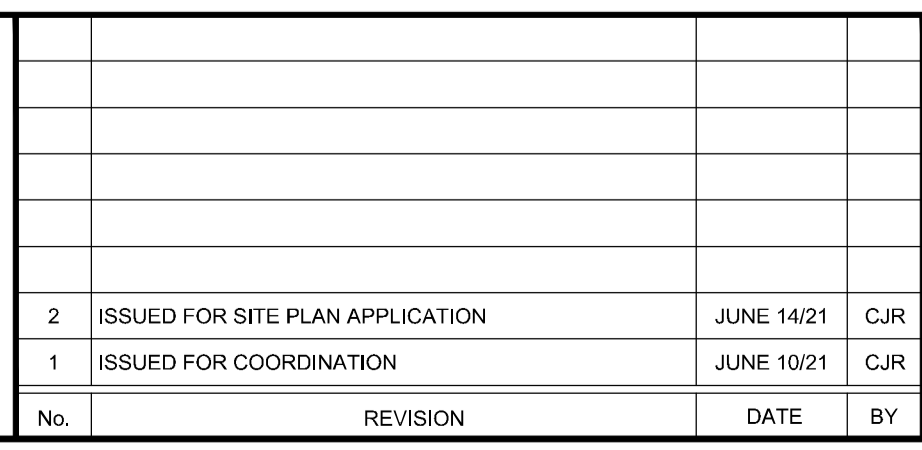
CROSSING TABLE

CROSSING NUMBER	CROSSING PIPE	CROSSING PIPE	DELTA
1	STM OBV EL=98.50	WAT INV EL=97.65	1.10m
2	STM OBV EL=98.51	COMB INV EL=97.01	0.50m
3	STM OBV EL=98.52	EL=97.33	0.81m
4	WAT OBV EL=98.05	EL=98.37	0.53m
5	STM OBV EL=98.29	EL=98.87	0.38m
6	WAT OBV EL=97.04	EL=97.54	0.50m

- LEGEND**
- PROPERTY LINE
 - PROPOSED CURB
 - PROPOSED DEPRESSED CURB
 - PROPOSED WATER SERVICE
 - PROPOSED VALVE AND VALVE BOX
 - PROPOSED CAP
 - PROPOSED FIRE HYDRANT
 - PROPOSED SANITARY SERVICE c/w MANHOLE
 - PROPOSED STORM SEWER AND MANHOLE
 - PROPOSED SANITARY SEWER WITH INSULATION
 - PROPOSED BUILDING AND SERVICE ENTRANCE
 - DIRECTION OF FLOW
 - PROPOSED CATCHBASIN MANHOLE
 - PROPOSED CATCHBASIN
 - GAS METER
 - PROPOSED WATER METER
 - PROPOSED WATER REMOTE METER
 - PROPOSED INLET CONTROL DEVICE
 - SWALE
 - PROPOSED RETAINING WALL
 - PROPOSED TRANSFORMER LOCATION
 - EXISTING WATERMAIN c/w VALVE & VALVE CHAMBER
 - EXISTING HYDRANT c/w VALVE & LEAD
 - EXISTING SANITARY MANHOLE & SEWER
 - EXISTING STORM MANHOLE & SEWER
 - EXISTING CATCHBASIN
 - EXISTING SWALE

NOTE:
THE POSITION OF ALL POLE LINES, CONDUITS, WATERMANS, SEWERS AND OTHER UNDERGROUND AND OVERGROUND UTILITIES AND STRUCTURES IS NOT NECESSARILY SHOWN ON THE CONTRACT DRAWINGS, AND WHERE SHOWN, THE ACCURACY OF THE POSITION OF SUCH UTILITIES AND STRUCTURES IS NOT GUARANTEED. BEFORE STARTING WORK, DETERMINE THE EXACT LOCATION OF ALL SUCH UTILITIES AND STRUCTURES AND ASSUME ALL LIABILITY FOR DAMAGE TO THEM.

No.	REVISION	DATE	BY
2	ISSUED FOR SITE PLAN APPLICATION	JUNE 14/21	CJR
1	ISSUED FOR COORDINATION	JUNE 10/21	CJR



DESIGN	LSC
CHECKED	CJR
DRAWN	LSC
CHECKED	CJR
APPROVED	CJR

FOR REVIEW ONLY

LICENSED PROFESSIONAL ENGINEER
C.J. RUDDE
PROVINCE OF ONTARIO

NOVATECH
Engineers, Planners & Landscape Architects
Suite 200, 240 Michael Cowpland Drive
Ottawa, Ontario, Canada K2M 1P6
Telephone (613) 254-9643
Facsimile (613) 254-5867
Website www.novatech-eng.com

LOCATION
MUNICIPALITY OF PORT HOPE
20 HOPE STREET SOUTH

DRAWING NAME
SOUTHBRIDGE CARE HOMES
PORT HOPE NURSING HOME
GENERAL PLAN OF SERVICES
INTERIM CONDITIONS

PROJECT No.	120226
REV	REV 2
DRAWING No.	120226-GP1