

LAND USE SCHEDULE		
LAND USE	AREA	SITE (%)
LOTS 1-31 = 3036m ² MIN. RURAL RESIDENTIAL	10.29ha	28.2%
BLOCK 101 - FUTURE ROAD WIDENING	0.15ha	0.4%
BLOCK 102 - 10-21 UNIT CONDOMINIUM/APARTMENT BUILDING	0.67ha	1.8%
BLOCK 103 - EXISTING WETLAND	1.18ha	3.2%
BLOCK 104, 109 - SWM POND	0.71ha	1.9%
BLOCK 105 - MAINTENANCE EASEMENT	0.10ha	0.3%
BLOCK 106, 108, 112 - OTHER LANDS OWNED BY DEVELOPER	15.19ha	41.5%
BLOCK 107 - DRAINAGE EASEMENT	0.10ha	0.3%
BLOCK 110 - REGULATED LANDS	4.29ha	11.7%
BLOCK 112 - HYDRO EASEMENT	1.87ha	5.1%
BLOCK 113 - 0.30m RESERVE	0.00ha	0.0%
20.0m MUNICIPAL ROAD ALLOWANCE - STREET A, B, C	2.05ha	5.6%
SITE TOTAL	36.60ha	100%

DRAFT PLAN OF SUBDIVISION
GARDEN HILL ESTATES
 PLAN 39R-14329 - PART OF LOT 16, CONCESSION 8
 MUNICIPALITY OF PORT HOPE
 COUNTY OF NORTHUMBERLAND

SCALE 1:1250

NO.	DATE (Y/M/D)	REVISION	BY
4.	22/12/06	REVISED PER MUNICIPALITY COMMENTS	C.O.
3.	22/08/31	REVISED PER MUNICIPALITY COMMENTS	C.O.
2.	22/05/26	REVISED PER MUNICIPALITY COMMENTS	C.O.

- ADDITIONAL INFORMATION REQUIRED - SECTION 51(17), PLANNING ACT**
- a) AS SHOWN ON THE DRAFT PLAN
 - b) AS SHOWN ON THE DRAFT PLAN
 - c) AS SHOWN ON THE DRAFT PLAN
 - d) SEE LAND USE SCHEDULE
 - e) AS SHOWN ON THE DRAFT PLAN
 - f) AS SHOWN ON THE DRAFT PLAN
 - f.1) NOT APPLICABLE
 - g) AS SHOWN ON THE DRAFT PLAN
 - h) WELL AND SEPTIC
 - i) CLAY SILT TO SILTY SAND
 - j) AS SHOWN ON THE DRAFT PLAN
 - k) NON APPLICABLE
 - l) AS SHOWN ON THE DRAFT PLAN

OWNER'S CERTIFICATE
 I AUTHORIZE MONUMENT GEOMATICS TO PREPARE AND SUBMIT THIS DRAFT PLAN FOR APPROVAL.

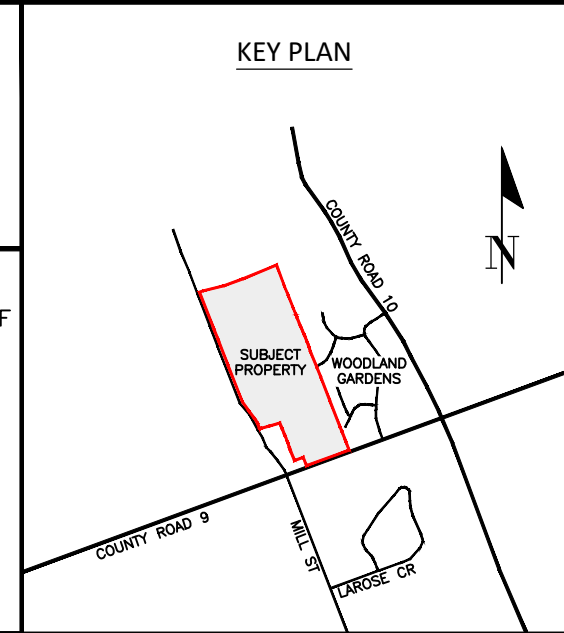
OWNER: MISTRAL LAND DEVELOPMENT INC.

DATE: _____

SURVEYOR'S CERTIFICATE
 I CERTIFY THAT THE BOUNDARIES OF THE LAND TO BE SUBDIVIDED AND CORRECTLY SHOWN.

ONTARIO LAND SURVEYOR
 D.S. URSO.

DATE: _____



PROJECT No.: 21-0135
 DRAWN: T.M.
 CHECKED: C.O.
 DATE: 22/12/06

