

**Stage 1 & 2 Archaeological Assessment
4646 County Road 2, Port Hope, Ontario
Formerly Part of Lot 12, Concession 2
Geographic Township of Hope, Durham County
Now in the Municipality of Port Hope, Ontario**

Prepared by:

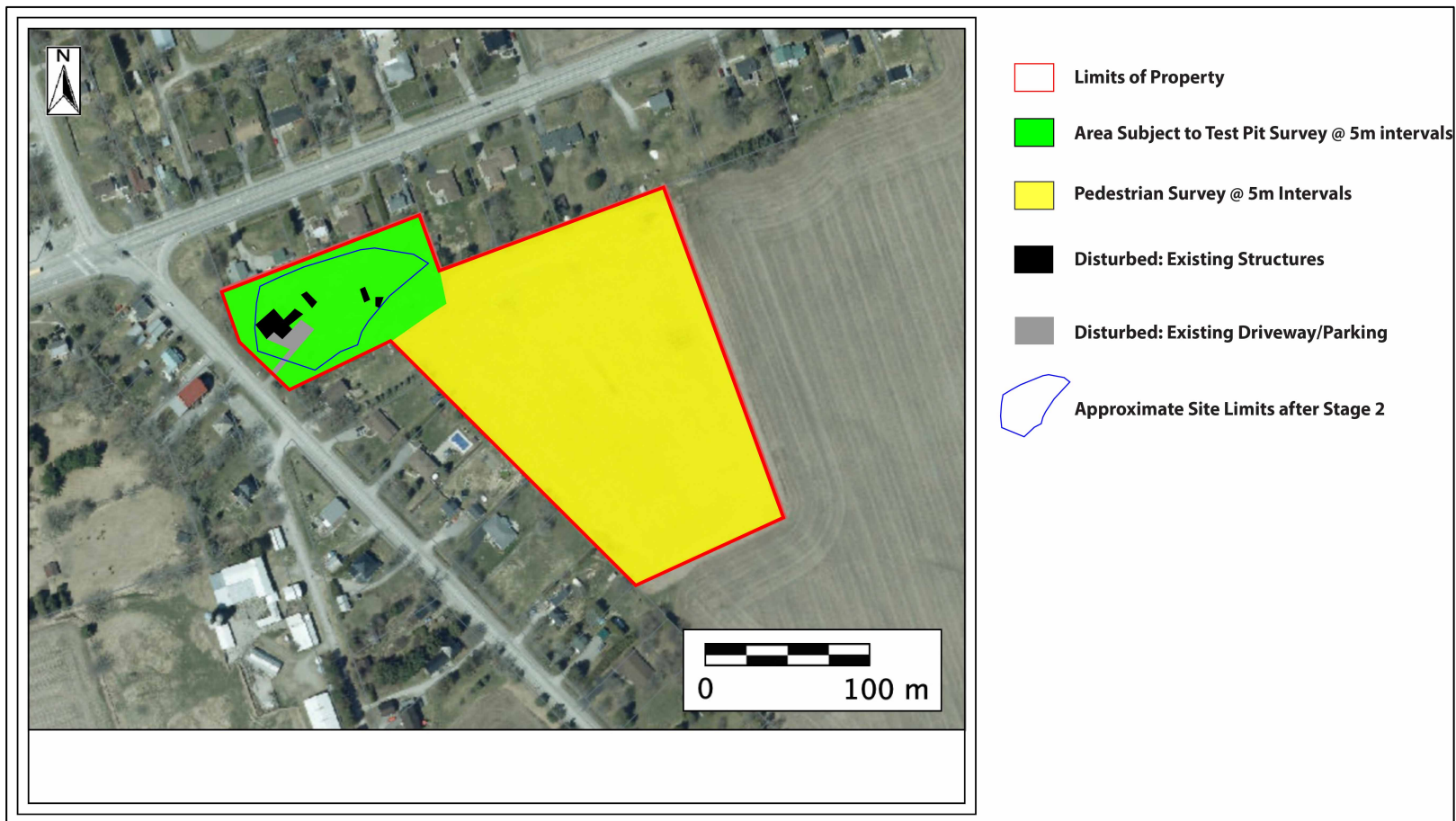


MCM Archaeological Consulting License # P124 (Dr. Helen R. Haines)
MCM P.I.F. # P124-0299-2024

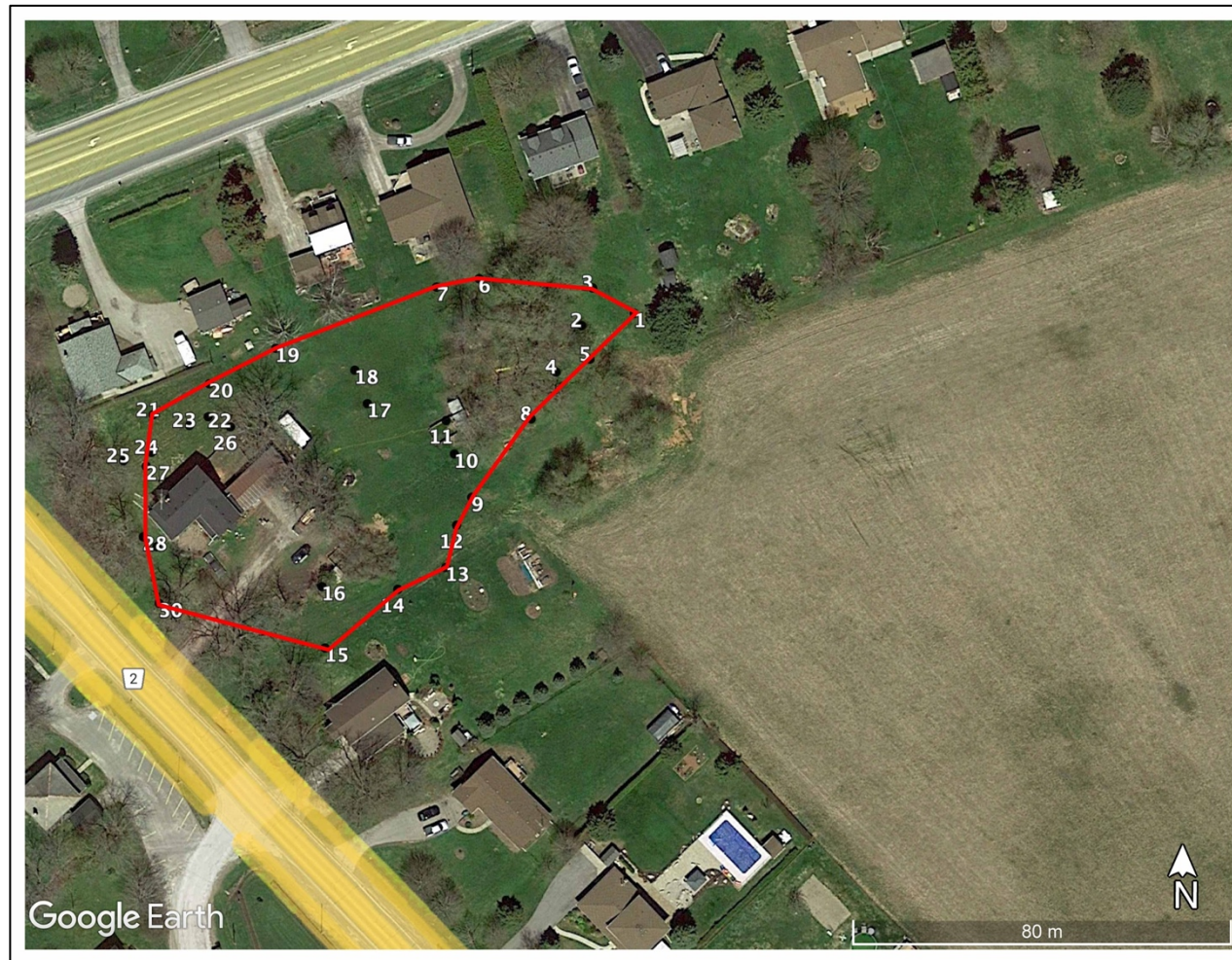
SUPPLEMENTARY DOCUMENTATION

Report Dated: August 15, 2024

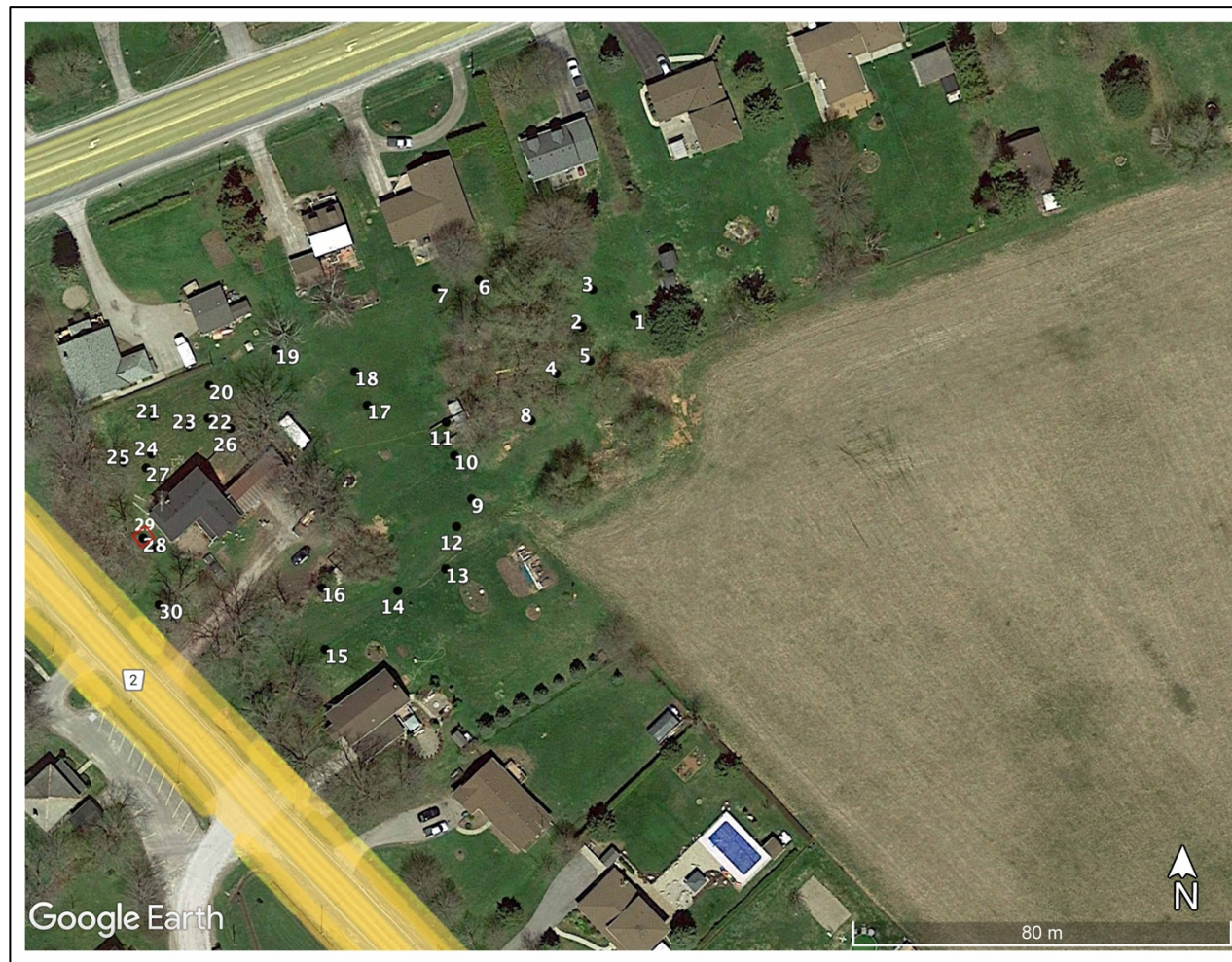
Table SD1: GPS Readings for McDonald Site (UTM Zone 17T)			
Type	ID	Easting	Northing
Samuel Jacob Site	Centre	713313	4872426
	North	713307	4872446
	East	713369	4872448
	West	713267	4872383
	South	713306	4872375
Fixed Landmark	Hydro Pole north of entrance to driveway	713231	4872414



Map 7: Shows approximate limits of Samuel Jacobs Site after Stage 2 archaeological assessment.



Map 8: Shows location of positive test pits and limits of the Samuel Jacobs Site after Stage 2 archaeological assessment.



Map 9: Shows location of positive test pits with test pit number. Note: A 1x1 metre test unit (red square) was placed over Test Pit #29 (Test Unit depiction is not to scale)